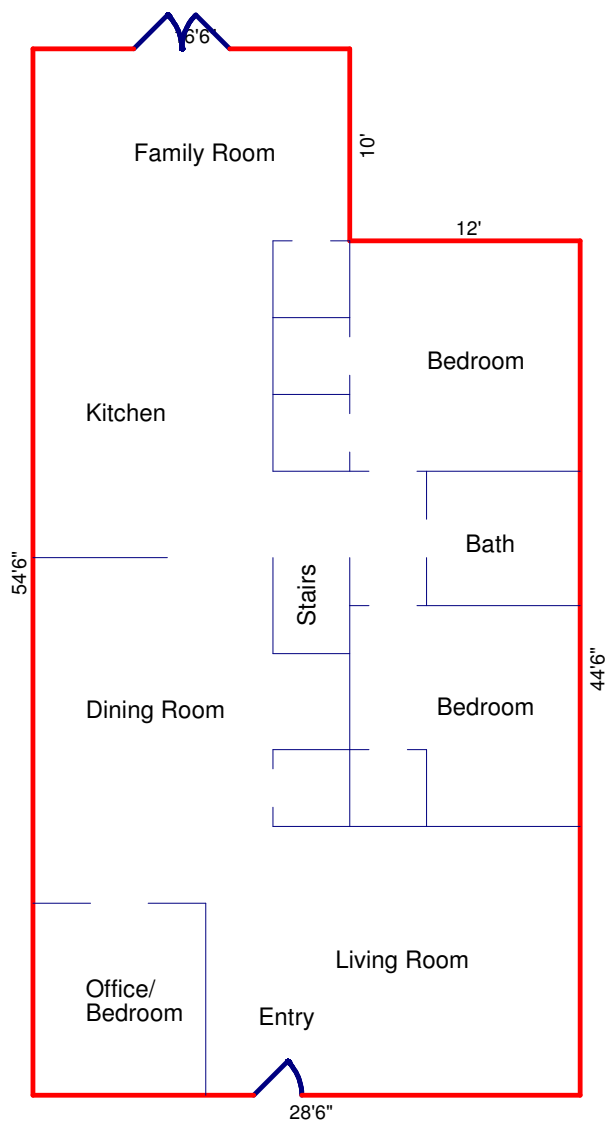
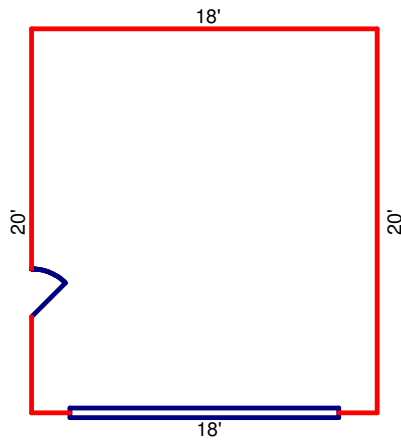


# 1705 CALIFORNIA STREET, BERKELEY

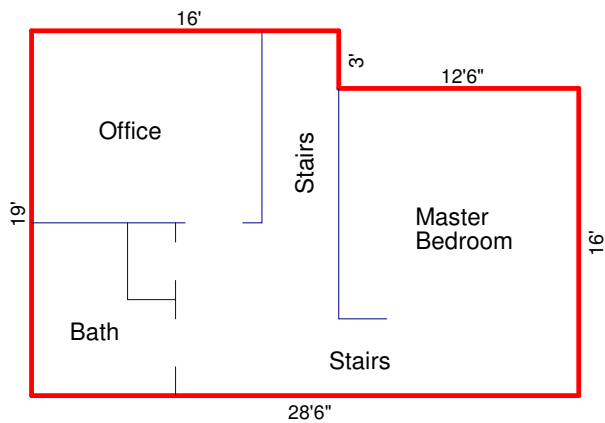
## FIRST FLOOR\*



## GARAGE



## SECOND FLOOR\*



Prepared by Adam M. Lehman  
 CA State Cert. R.E. Appraiser  
 AR003634, on 08/27/2018

FIRST FLOOR*	SECOND FLOOR*	GARAGE	
16.5 x 54.5 = 899.25	3 x 16 = 48	18 x 20 = 360	SF
12 x 44.5 = 534	16 x 28.5 = 456		
Subtotal* 1433.25 SF	Subtotal* 504 SF	* Total G.L.A. 1937.25 SF	
Total* 1433.25 SF	Total* 504 SF	Total OTHER 360 SF	